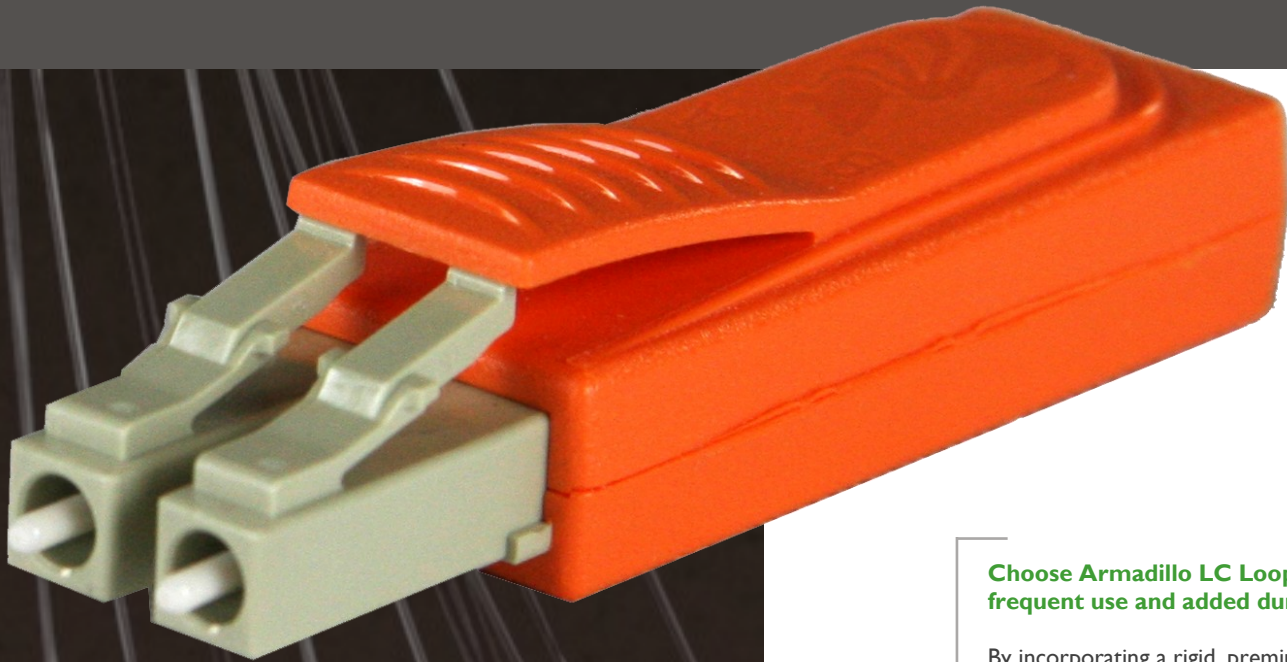


Armadillo LC Loopbacks

timbercon



BENEFITS

- Easier cable insertion and extraction
- Channel markers will not fade or rub off
- Increased lifespan
- Precise performance for each specific application
- Easy part identification
- Improved shell rigidity
- Precise optical performance

APPLICATIONS

- Research & development
- Manufacturing test
- Troubleshooting
- Quality control
- Training

COLORS



Choose Armadillo LC Loopbacks for frequent use and added durability

By incorporating a rigid, premium quality connector shell for fiber protection, with an easy to use ergonomic package, the Armadillo loopback is designed for longevity and performance.

Typically used for test and measurement procedures in laboratory and manufacturing environments, the Armadillo loopback is an ideal product for a multitude of applications requiring signal looping in a duplex LC form factor.

The Armadillo LC loopback features a long molded thumb release for easy insertion and removal, full seam ultrasonic weld for increased product durability, and an enclosed fiber shell for exposed fiber protection.

Highly Customizable

Armadillo products are easily customizable with multiple configurations, colors, and attenuation levels. This customization allows you the closest match to your application requirements.

PREMIUM SOLUTIONS

Long thumb release

Molded A & B channel markers

Full seam ultrasonic weld

Custom colors available

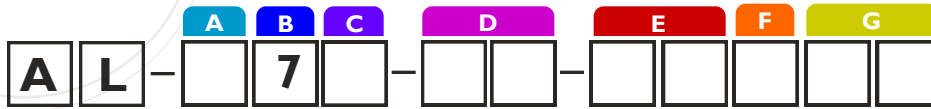
Large inset label pocket

Definable attenuation levels from

0dB to 24dB

FEATURES

Armadillo LC Loopbacks



PART NUMBER GENERATOR

A - Fiber Type

- 4 SM 4um
- 5 MM 50um
- 6 MM 62.5um
- 7 LO MM 50um
- 9 SM 9um
- 0 Custom

B - Connector

- 1 LC Arma
- 2 SC Arma
- 3 MT-RJ Female
- 4 MT-RJ Male
- 5 MTP Female
- 6 MTP Male
- 7 LC Arma
- 8 MU

C - Polish Type

- 1 MM PC
- 4 SM UPC
- 5 SM APC
- 6 Flat

D - Color

- 02 Black
- 03 Blue (SC)
- 04 Green
- 06 Navy (LC)
- 07 Orange
- 08 Red
- 09 Sage (LC)
- 10 Violet
- 11 Yellow
- 99 Custom

E - Wavelength

- 01 850 nm
- 02 1310 nm
- 07 1550 nm
- 20 1310 nm / 1550 nm

F - Light Source

- 1 LED
- 2 VCSEL
- 3 Fabry Perot
- 4 DFB
- 5 DFB or FP
- 9 Custom

G - Attenuation

- | | | | |
|----|-------|----|--------|
| 00 | 0 dB | 13 | 13 dB |
| 01 | 1 dB | 14 | 14 dB |
| 02 | 2 dB | 15 | 15 dB |
| 03 | 3 dB | 16 | 16 dB |
| 04 | 4 dB | 17 | 17 dB |
| 05 | 5 dB | 18 | 18 dB |
| 06 | 6 dB | 19 | 19 dB |
| 07 | 7 dB | 20 | 20 dB |
| 08 | 8 dB | 21 | 21 dB |
| 09 | 9 dB | 22 | 22 dB |
| 10 | 10 dB | 23 | 23 dB |
| 11 | 11 dB | 24 | 24 dB |
| 12 | 12 dB | 99 | Custom |

ATTENUATION MATRIX

dB	% of Power Lost
1	21%
2	37%
3	50%
4	60%
5	68%
6	75%
7	80%
8	84%
9	88%
10	90%
11	92%
12	93.70%
13	95%
14	96%
15	96.80%
16	97.50%
17	98%
18	98.40%
19	98.70%
20	99%
25	99.70%
30	99.90%
40	99.99%
50	100%

PERFORMANCE

	SM	MM
Insertion Loss (Typical)	1.0 dB	0.35 dB
Back Reflection (Typical)	≤-55 dB	≤-35 dB
Mating Durability (500 Cycles)	<0.2 dB	<0.2 dB
Temperature Range	-40°C to 85°C	-40°C to 85°C

ATTENUATION

	SM	MM
0 dB - 10 dB	±1 dB	±1 dB
11 dB - 24 dB	±10%	±10%

ABOUT

Founded in 1997, Timbercon, Inc. is a fiber optic product and solution manufacturing company providing a vast array of connectivity solutions to the data storage, telecommunications, military, industrial, broadcast and networking industries. In addition to standard fiber optic patch cords and attenuated test cables, Timbercon has pioneered proprietary products, many of which are now considered to be an industry benchmark.

TIP

The attenuation level of your loopback is dependent on a specific light source and wavelength. For optimal performance with your application, specify both wavelength and light source type. This match will ensure a precise level of attenuation for your specific application.