

Applications

- Network Simulation
- Equipment Testing
- Calibration
- Training
- Delay Line Applications

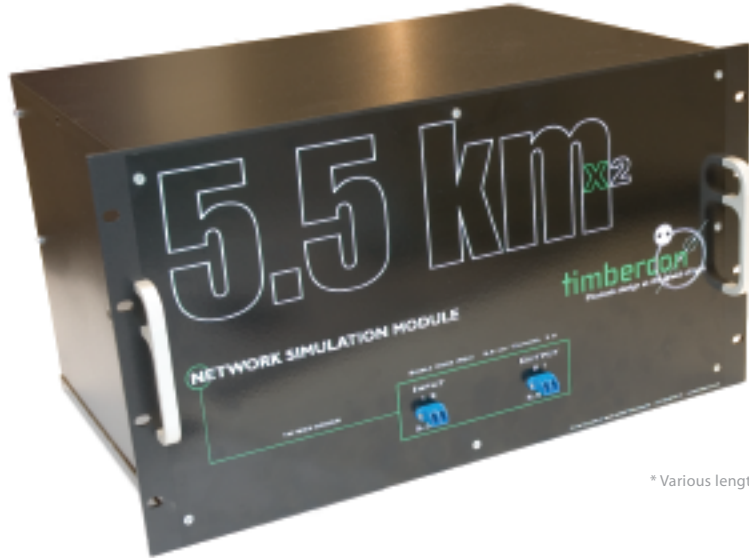
Features

- Lengths from 10m to 200km*
- Mechanical and/or fusion splicing
- Multiple fiber and connector options
- Rack mountable and self contained portable enclosure options
- Actual distance spooling for precise 'natural' attenuation

Benefits

- Standard and custom lengths
- Multiple splicing methods
- SM and MM fiber types
- SC, LC, ST, FC, MU connector options for easy integration to existing systems
- Multiple boxes can be joined using interconnect sleeves
- Enclosure options allow for increased product versatility

Learn **MORE** Online:
www.timbercon.com



* Various lengths available

Network Simulation Modules are ideal for testing applications

Designed to provide an easy and efficient means for testing, analysis, demonstration, training, and delay line applications. Timbercon Network Simulation Modules are available in multiple lengths, channel counts, and channel bridging options for increased flexibility. Connector type, fiber type, and enclosure type options allow each module to be easily integrated into new or existing systems.

Each Timbercon Network Simulation Module comes with documented performance specifications including insertion loss, attenuation/Km of fiber, actual distance, and dispersion slope.

For all channel bridging applications, Timbercon Master Calibration Cables are recommended to reduce insertion loss associated with standard patch cord usage.

Performance Specifications

Insertion Loss (typical)	SM	MM
FC, ST, SC, LC, MU	0.15dB	0.35dB
MTRJ	0.3dB	0.3dB
Attenuation dB/Km (Max) @ 850nm	-	3.5dB
Attenuation dB/Km (Max) @ 1310nm	0.5dB	1.0dB
Attenuation dB/Km (Max) @ 1550nm	0.5dB	-
Back Reflection (Typical)	≤-55dB	≤-20dB
Mating durability (500 Cycles)	<0.2dB	<0.2dB
Temperature Range	-40°C to 85°C	-40°C to 85°C

Construction Specifications

19" rack mount enclosure weight:
 from 8.0 lbs. to 35 lbs. depending on length

Portable enclosure:
 Size / Weight dependent on application

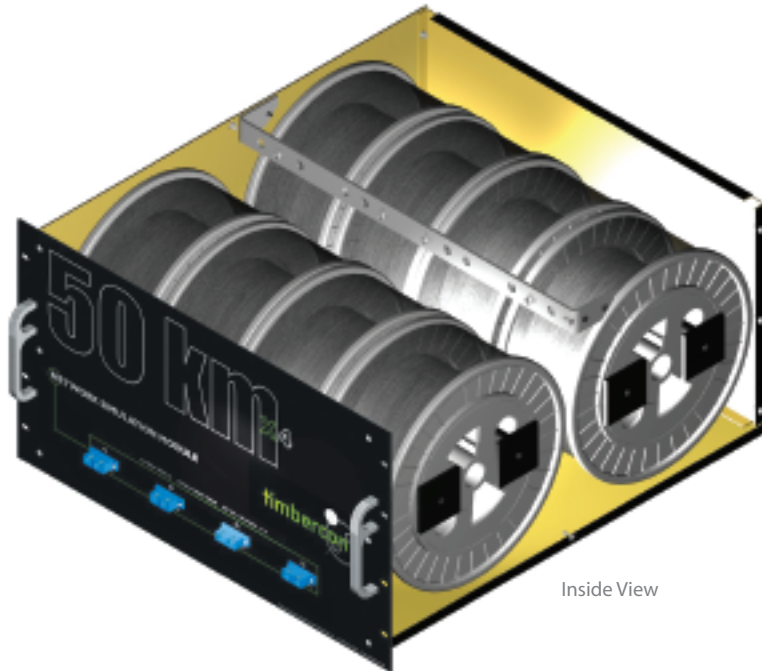


Call for a Quick Quote:
1-800-221-6992

17387 SW 63rd Avenue • Lake Oswego, OR 97035 • USA
 800-221-6992 • 503-827-8141 • 503-228-6747 Fax
www.timbercon.com • info@timbercon.com

Network Simulation Module

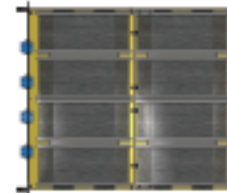
timbercon
Photonic design at the speed of light



Inside View



Front View



Top View



Side View

Realistic and "Natural" Attenuation

Timbercon's Network Simulation Modules are a ideal choice of testing applications as they produce "natural" attenuation by spooling the actual distance of fiber inside the module, virtually eliminating attenuation variances often associated with VOA (variable optical attenuators).

About Timbercon

Founded in 1997, Timbercon, Inc. is a fiber optic product and solution manufacturing company providing a vast array of connectivity solutions to the data storage, telecommunications, military, industrial, broadcast and networking industries. In addition to standard fiber optic patch cords and attenuated test cables, Timbercon has pioneered proprietary products, many of which are now considered to be an industry benchmark.

Standard Configurations

TM-901-00002

Network Simulation Module - 10KM, 1 Channel, SM 9 μ m, SC/APC

TM-901-00003

Network Simulation Module - 20KM, 1 Channel, SM 9 μ m, SC/APC

TM-901-00011

Network Simulation Module - 20KM, 1 Channel, SM 9 μ m, FC/UPC

TM-904-00016

Network Simulation Module - 25KM, 4 Channel, SM 9 μ m, SC/UPC

TM-908-00042

Network Simulation Module - 25KM, 8 Channel, SM 9 μ m, SC/UPC

TM-901-00004

Network Simulation Module - 30KM, 1 Channel, SM 9 μ m, SC/UPC

TM-901-00024

Network Simulation Module - 50KM, 1 Channel, SM 9 μ m, FC/UPC

TM-904-00015

Network Simulation Module - 50KM, 4 Channel, SM 9 μ m, SC/UPC

TM-902-00014

Network Simulation Module - 100KM, 2 Channel, SM 9 μ m, SC/UPC

TM-701-00031

Network Simulation Module - 300KM, 1 Channel, LOMMF 50 μ m, SC/PC