

Applications

- Outside plant
- Premise networks
- Aerial distribution
- Communications closet/NOC
- Interconnect

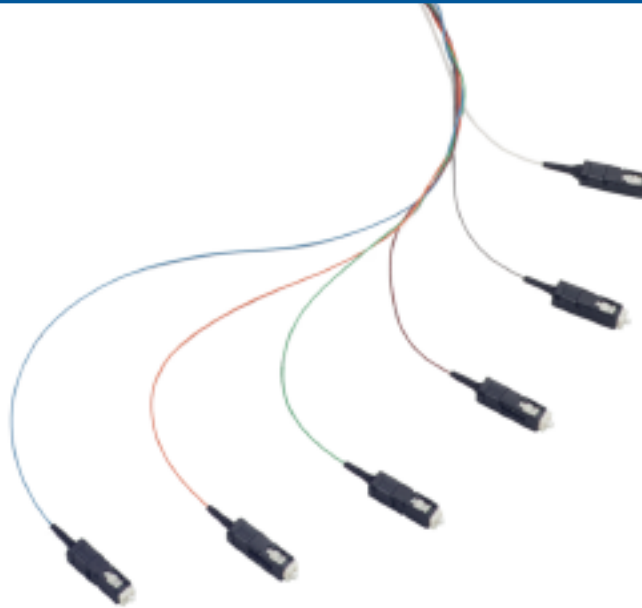
Features

- Single assembly with multiple fiber terminations
- Multiple fiber construction types
- SC, LC, ST, FC, and MU connector options
- Definable cable and breakout style/length

Benefits

- Standard and custom precision polishing is guaranteed to meet or exceed application requirements and industry standards
- Built to fit your application
- Product customization allows virtually any part of the product to be designed and built to provide the ideal solution for those very specific, tight tolerance applications.

Learn **MORE** Online:
www.timbercon.com

Choose Multi-Fiber Distribution cables for your network and multi-connection needs

Timbercon multi-fiber distribution cable assemblies combine the bandwidth capacity of several individual cable assemblies into a single convenient, easy to use and install assembly. Multi-fiber distribution cable assemblies are traditionally used in backbone, premise distribution, and interconnect applications which require multiple fibers to be routed together from point-to-point.

Timbercon multi-fiber distribution cables are designed to offer a high degree of flexibility through available features and options, allowing each cable to be manufactured to fit the exact application.

Multi-fiber distribution cables are available in singlemode, multimode, and laser optimized fiber types, multiple jacket/construction types for different applications, fiber count from 4-144 fibers, SC, LC, ST, FC, and MU connector types, and breakout style/length.

Pulling eye option

For easier installation and or routing of your multi-fiber distribution cable, Timbercon offers a pulling eye option which can be installed on any cable prior to every leaving the factory. Contact your Timbercon representative for additional information on pulling eye options.

Performance Specifications

Insertion Loss (typical)	SM	MM
FC, ST, SC, LC, MU	0.15dB	0.35dB
Back Reflection (Typical)	≤-55dB	≤-20dB
Mating durability (500 Cycles)	<0.2dB	<0.2dB
Temperature Range	-40°C to 85°C	-40°C to 85°C

Construction Specifications

	Buffer	Strength Member	Jacket
Distribution Cable (Riser / Plenum)	900µm	Kevlar	PVC / PVDF
Breakout Cable (Riser / Plenum)	900µm	Kevlar	PVC / PVDF
Mil-Tac Cable (Riser / Plenum)	900µm	Kevlar	Polyurethane

(Other Jacket types and sizes available)

Multi-Fiber Distribution

Part Number Generator

M
F
A
B
C
D
E
F
G
H
J
K
L

A - Fiber Type

- 5 MM 50µm
- 6 MM 62.5µm
- 7 LO MM 50µm
LO MM for 10 Gig Applications
- 9 SM 9µm
- 0 Custom

B - Construction Type

- 01 Dist. Riser
- 04 Breakout Riser
- 20 Dist Mil-Tac
- 25 Breakout Mil-Tac
- 99 Custom

C - Fiber Count

Enter the fiber count:

EXAMPLE:
12 Fibers = 012

Part Number Example: MF-501012-211-211-41010M

This represents:
MULTIFIBER CABLE ASSEMBLY -
MULTIMODE 50/125µm, 12 FIBER RISER
DISTRIBUTION JACKET, SC/PC TO SC/PC,
900µm SUBUNIT, 24" STAGGERED FANOUT.
LENGTH: 10 METER

About Timbercon

Founded in 1997, Timbercon, Inc. is a fiber optic product and solution manufacturing company providing a vast array of connectivity solutions to the data storage, telecommunications, military, industrial, broadcast and networking industries. In addition to standard fiber optic patch cords and attenuated test cables, Timbercon has pioneered proprietary products, many of which are now considered to be an industry benchmark.

D - Connector 1

- 03 FC
- 07 LC
- 19 MU
- 21 SC
- 25 SMA 905
- 26 SMA 906
- 27 ST
- 71 LC Arma Yellow
- 72 LC Arma Orange
- 73 LC Arma Black
- 74 LC Arma Aqua
- 81 SC Arma Yellow
- 82 SC Arma Orange
- 83 SC Arma Black
- 99 Custom

E - End Polish 1

- 1 MM PC
- 2 SM UPC
- 4 SM APC

F - Connector 2

- 00 No Connector
- 03 FC
- 07 LC
- 19 MU
- 21 SC
- 25 SMA 905
- 26 SMA 906
- 27 ST
- 71 LC Arma Yellow
- 72 LC Arma Orange
- 73 LC Arma Black
- 74 LC Arma Aqua
- 81 SC Arma Yellow
- 82 SC Arma Orange
- 83 SC Arma Black
- 99 Custom

G - End Polish 2

- 1 MM PC
- 3 SM UPC
- 4 SM APC

H - Fanout Length

- 1 12"
- 2 12" Staggered
- 3 24"
- 4 24" Staggered
- 5 36"
- 6 36" Staggered
- 9 Custom
- 0 None

J - Sub-Unit Style

- 1 900mm
- 2 2.5mm
- 3 3.0mm
- 4 2.0mm
- 5 3mm SS
- 9 Custom
- 0 None

K - Cable Length

Enter unit length in whole numbers. Use block (L) to specify unit of measure.

EXAMPLE: (K) (L)
10 Meter Cable = 010 M

L - Unit of Measure

- N Inches
- F Feet
- C Centimeters
- M Meters
- K Kilometers

TIP:

Search OEM equivalent part numbers online at:
<http://www.timbercon.com/oem>



Armadillo LC



Armadillo SC



LC



SC



ST



FC